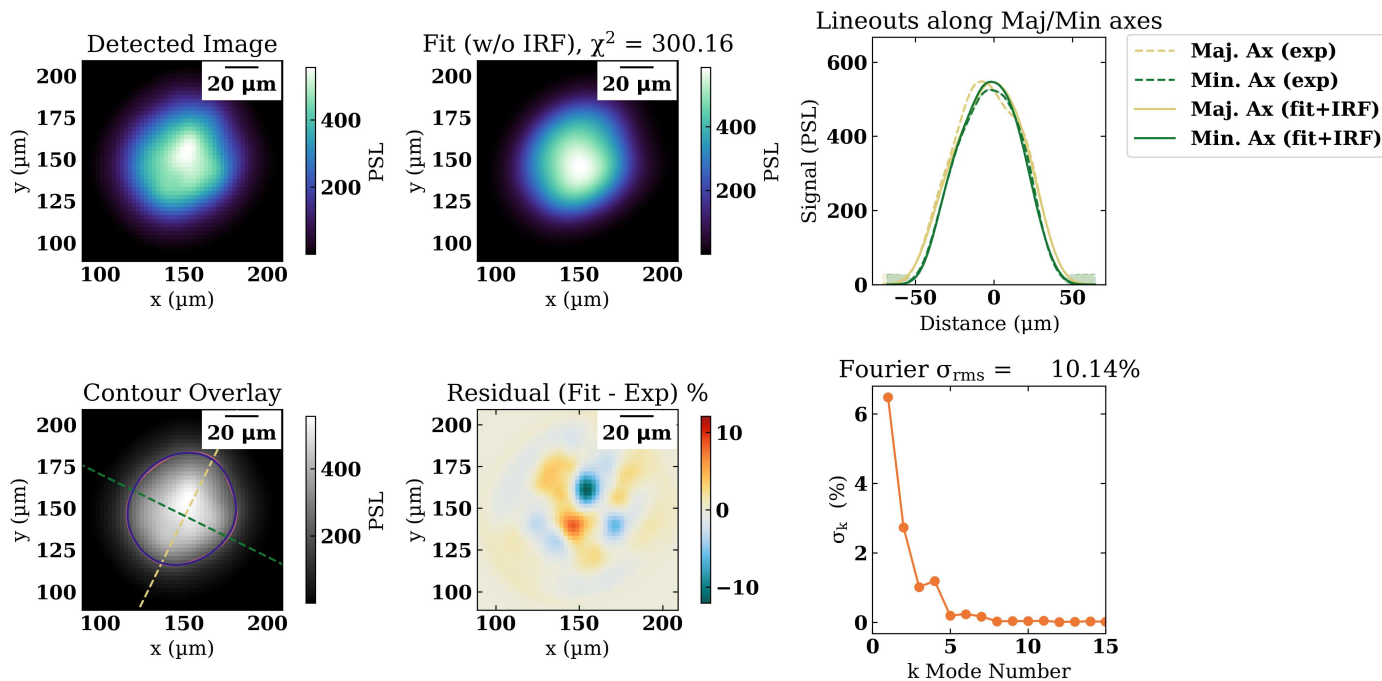


Results

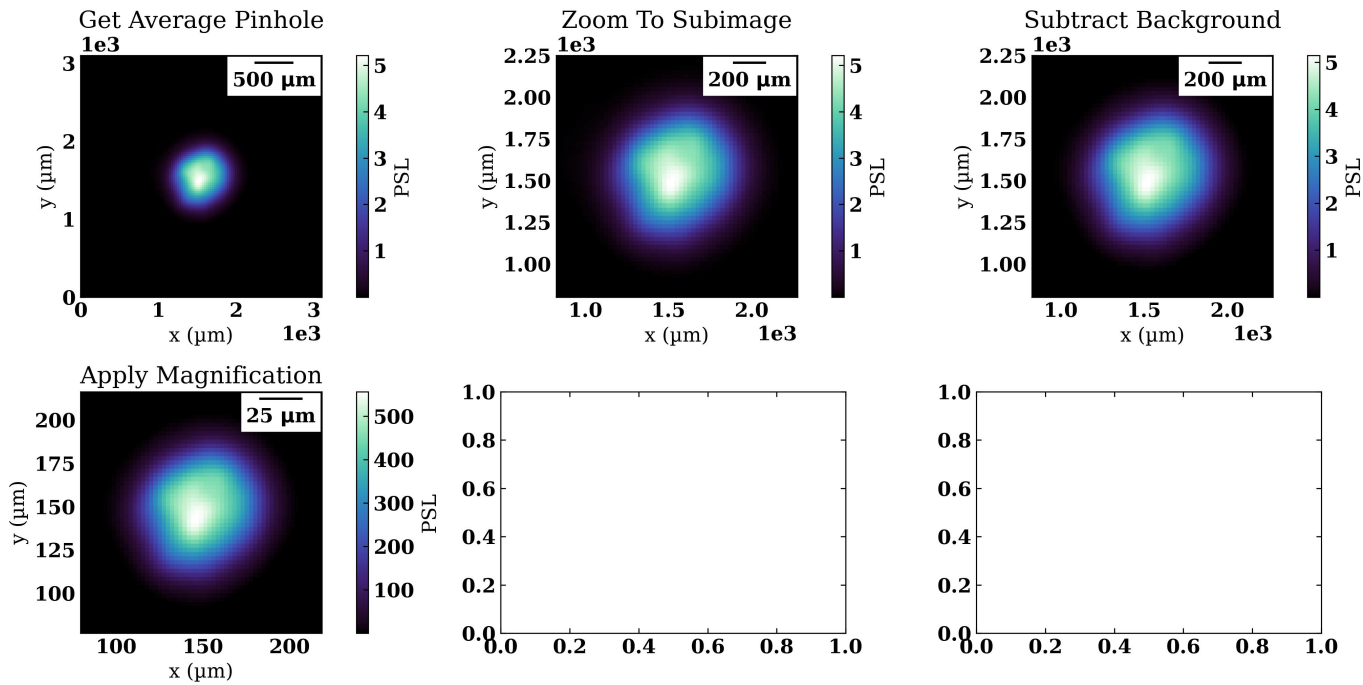
| Parameter | Channel 1 |
|------------------------|---------------------|
| Fit Metric | 300 |
| Amplitude | 586 ± 0.182 PSL |
| Axial Ratio | 1.13 ± 0.000182 |
| Core Offset | 4.56 ± 0.108 |
| L1 Angle | 1.98 ± 0.0103 |
| L2 Angle | -2.03 ± 0.00238 rad |
| Major Axis | 33.7 ± 0.00985 μm |
| Minor Axis | 29.8 ± 0.00672 μm |
| Photon Yield | 1.17e+04 ± 21.2 J |
| R0 | 31.7 ± 0.00417 μm |
| R17 | 38.3 ± 0.00289 μm |
| Supergaussian Exponent | 2.4 ± 0.009 |
| X Center | 151 ± 2.84e-14 μm |
| Y Center | 145 ± 0.118 μm |

TRXI IP 1 SG Fit

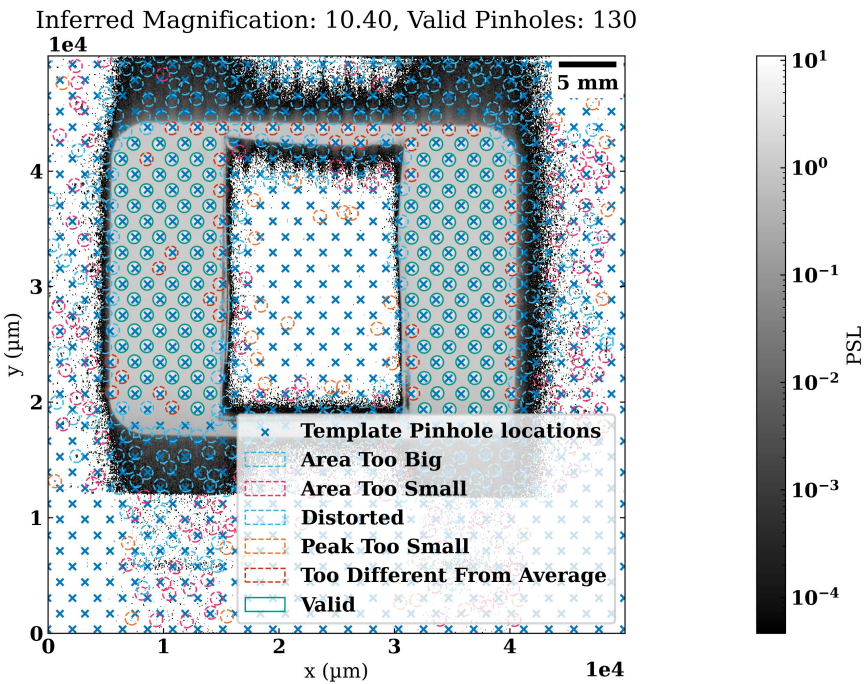


TRXI IP 1

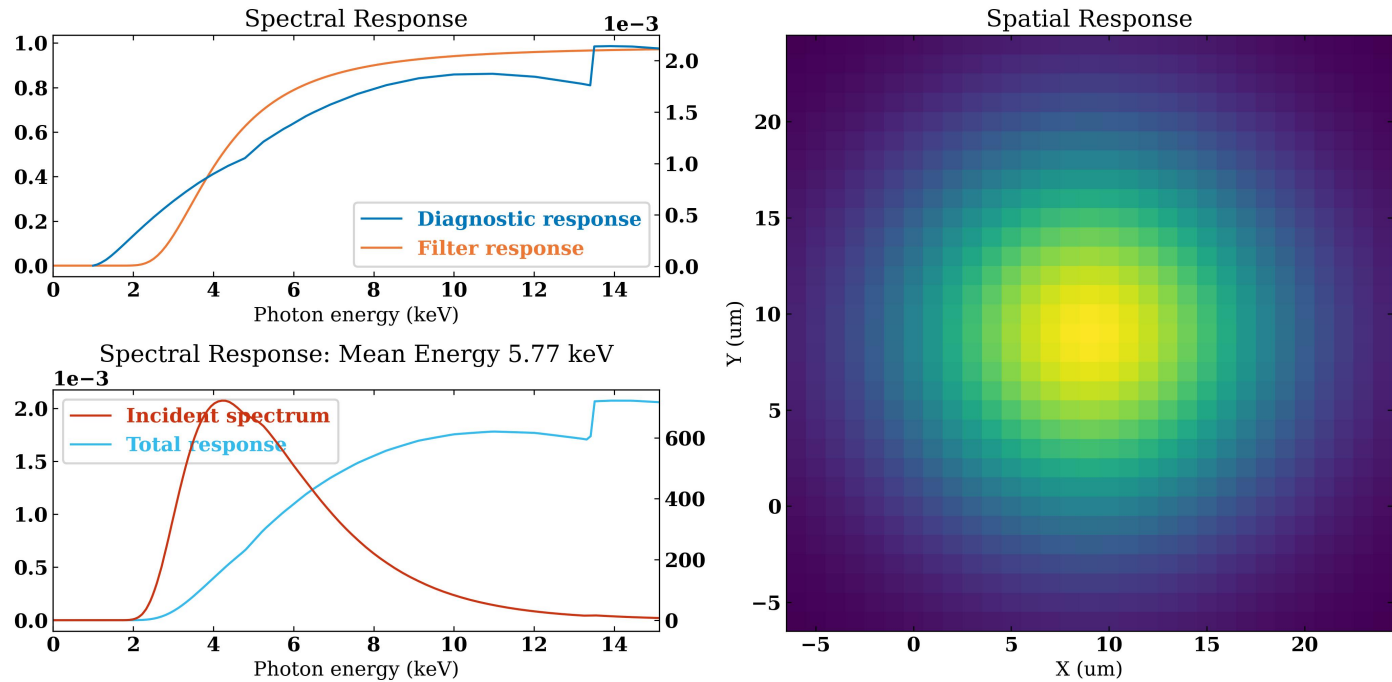
TRXI IP 1 Processing



TRXI IP 1 Pinhole Locator Report



TRXI IP 1 Response Functions



TRXI IP 1 Fresnel Diffraction

Fresnel Diffraction for $D = 5\text{ }\mu\text{m}$, $M = 10.40$, $R = 166\text{ mm}$

